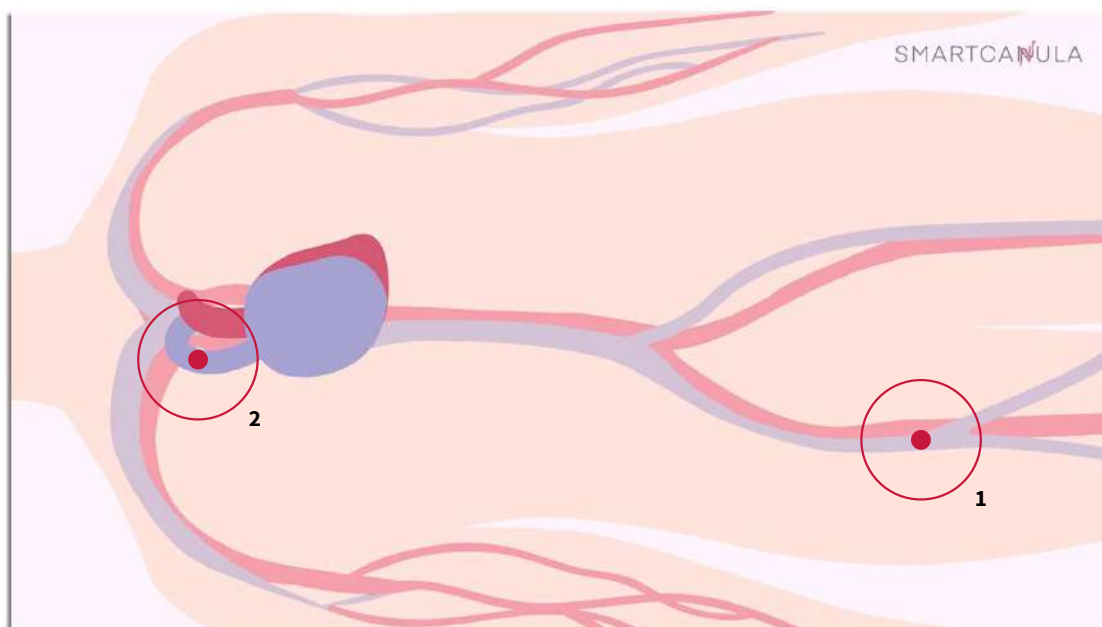


# RECOMMENDATION FOR SMARTCANULA SELECTION IN TYPICAL PROCEDURES

(SINGLE / FEMORAL)



## OPEN SURGICAL ACCESS

Patient's Body Length | smartcanula

<170 cm | 3/8 24F 630

>170 cm | 3/8 24F 680

## PERCUTANEOUS ACCESS

Patient's Body Length | smartcanula

<170 cm | 3/8 24F 680

>170 cm | 3/8 24F 730

- ! Decision of correct smartcanula length must be taken by a well-trained medical professional
- ! Required smartcanula length has to be checked individually for each patient
- ! Evaluate the distance between ② superior vena cava and ① insertion point
- ! The **uncovered** smartcanula part must be **shorter** than the distance between SVC and insertion point
- ! The **covered** smartcanula part needs to be inserted into the vessel to provide the seal – all smartcanulas ≥630 have a covered part of 17 cm

### POSITIONING RECOMMENDATION:

The stretched smartcanula should be positioned in the SVC. During insertion with the mandrel, the smartcanula is extended by 10%, and shortens to its nominal length when removing the mandrel.

